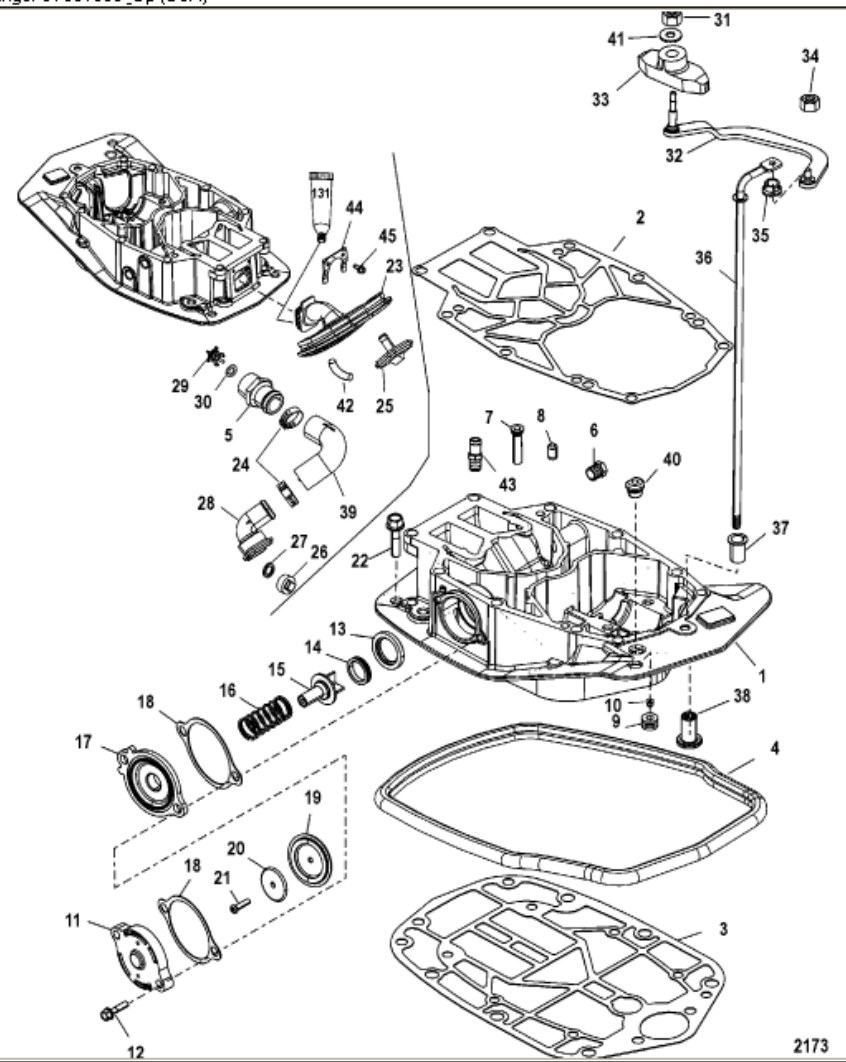


Parts List					
Ref	Class	Part	Description	Qty	Footnote
1		832935A17	EXHAUST PLATE	1	
2	27	832933	GASKET	1	2,5
3	27	832934	GASKET (Lower)	1	2
4		823805	SEAL	1	
5	22	832076	FITTING, Check Valve	1	
6	22	32803	PLUG, Pipe (.375-18 Brass)	2	
7	21	817519A	CHECK VALVE, Drain	2	
8	17	43044	PIN, Dowel (.375 x .625) (Witho	4	
9	25	822002	GROMMET	1	
10	19	48323	PLUG	1	
11		65663A	COVER ASSEMBLY	1	
12	10	818934	SCREW, (M8 x 35)	2	
13		814190	CARRIER	1	
14	25	814191	GROMMET	1	
15		814189	POPPET	1	
16	24	64878	SPRING	1	
17		65664A	PLATE ASSEMBLY	1	
18	27	88907003	GASKET	2	2
19		64877	DIAPHRAGM	1	
20	12	76451	WASHER	1	
21	10	69570	SCREW, (#10-16 x .750)	1	
22	10	818934	SCREW, (M8 x 35)	6	
23		850306A04	IDLE EXHAUST BOOT KIT	1	(Includes ref. &apos;s 44 & 45)
24	54	850896	CLAMP, (28.6)	2	
25		821904	FITTING, Telltale	1	
26	19	821908	PLUG	1	
27	12	821915	WASHER	1	
28	22	859600	FITTING	1	
29		821963	CHECK VALVE	1	
30	25	30641	O-RING	1	
31	11	40138	NUT, (M6)	1	
32		883142A	SHIFT LINK	1	SN# 0T979999 & Below
32		883142A03	SHIFT LINK KIT	1	SN# 0T980000 & Up
33		853968	SLIDE	1	
34	11	40138	NUT, (M6)	1	
35	23	42994	BUSHING	1	
36		824070	UPPER SHIFT SHAFT	1	(Long)
36		824070	UPPER SHIFT SHAFT	1	(X-Long)
36		824070	UPPER SHIFT SHAFT	1	(XX-Long)
37	23	48237	BUSHING	1	
38		42585	COUPLING	1	



2173